

# THE MIDDLE OF EVERYWHERE GIPPSLAND DRAIVE



## SUPPLEMENTARY REGULATIONS

9-11 AUGUST 2024

ROUND 4 BOSCH MOTORSPORT AUSTRALIA RALLY CHAMPIONSHIP



[GIPPSLANDRALLY.COM.AU](http://GIPPSLANDRALLY.COM.AU)

### EVENT SPONSORS



### CHAMPIONSHIP SPONSORS / RALLY.COM.AU



## Contents

---

INTRODUCTION AND WELCOME .....	2
ARTICLE 1 EVENT PROGRAM .....	3
ARTICLE 2 EVENT COMPLIANCE .....	4
ARTICLE 3 GENERAL INFORMATION.....	5
ARTICLE 4 OFFICIALS OF THE RALLY .....	6
ARTICLE 5 EVENT DESCRIPTION .....	6
ARTICLE 6 EVENT ELIGIBILITY .....	7
ARTICLE 7 VEHICLE ELIGIBILITY .....	7
ARTICLE 8 COMPETITOR AND CREW ELIGIBILITY .....	7
ARTICLE 9 ENTRY FORM, ENTRIES, ENTRY FEE & REFUND POLICY.....	7
ARTICLE 10 INSURANCE.....	8
ARTICLE 11 RUNNING OF THE RALLY .....	8
ARTICLE 12 SCRUTINEERING .....	8
ARTICLE 13 TESTING .....	9
ARTICLE 14 RECONNAISSANCE.....	9
ARTICLE 15 SERVICING AND REFUELLING .....	9
ARTICLE 16 APPLICATION OF REGULATIONS – CONTROLS AND PARC FERMÉ .....	10
ARTICLE 17 EMERGENCY PROCEDURES AND RED FLAGS.....	10
ARTICLE 18 RESULTS AND PROTESTS .....	11
ARTICLE 19 AWARDS .....	11
ARTICLE 20 ALCOHOL, DRUGS, AND OTHER SUBSTANCES.....	11
ARTICLE 21 EVENT SPECIFIC REGULATIONS .....	12
ATTACHMENT 1 EVENT ITINERARY .....	14
ATTACHMENT 2 RECONNAISSANCE SCHEDULE .....	16
ATTACHMENT 3 OTHER INFORMATION AS AVAILABLE .....	18

## INTRODUCTION AND WELCOME

---

Dear Competitors,

Welcome and thank-you for your interest in The Middle of Everywhere Gippsland Rally 2024, Round 4 of the Bosch Motorsport Australia Rally Championship® and Round 3 of the Victorian Rally Championship.

We are excited to have national level rallying returning for the third year in Victoria's Gippsland region. The Gippsland Rally is based in Heyfield which is just under two and a half hour's drive, 200km, east of Melbourne. The action is all-daylight, with the national championship running Saturday and Sunday, and the state championship will run over 8 stages on the Saturday only.

The rally will enter the mountains north-west of Heyfield, between Walhalla, Toombon and Glenfalloch on Saturday. Reaching towards Victoria's High Country, using the same roads as 2023 so giving crews a chance to test themselves on familiar stages. The Sunday stages will move to the forest north of Briagolong, approximately 1h east of Heyfield and with a series of technical forest stages, before a return to the exciting Power Stage which will be held at the Boisdale Hill Climb track, giving great viewing options for spectators. The country's best teams will have great and enjoyable challenges along the course.

The event is fortunate again have the considerable support of the Wellington Shire and Victorian State Government among a host of event partners including BSR Automotive, Mattronics, Sonax, Australian Sustainable Hardwood, Wilmour Motors and the Railway Hotel. This year we also welcome Big Brothers Big Sisters Australia our event charity partner.

Thanks to the Department of Energy, Environment and Climate Action for access to the State Forests we love to rally in and for their use during the restoration works following the devastating fires and floods that ravaged the region late 2023.

The Victorian rally community is excited to continue to host a round of the ARC and build on the success of the previous years' events. Thanks again to the continued support of the Car Club RMIT (CCRMIT) for their involvement in supporting and helping to make this event run. We hope to continue to build the event with a large pool of friendly, dedicated and committed volunteer officials to be the best event on the Victorian calendar.

Andrew Roseman

**Clerk of the Course**

On behalf of The Organising Team

## ARTICLE 1 EVENT PROGRAM

DATE	ITEM	LOCATION
<b>Friday</b>	<b>14th June 2024</b> (8 weeks prior to event)	
	Supplementary Regulations published	Sportity
	Entries open	www.rally.com.au/Gippsland
	Media accreditation available	www.rally.com.au/Gippsland
<b>Friday</b>	<b>26th July 2024</b> (2 weeks prior to event)	
	Closing date for tyre orders	MRF (Pinnacle) Tyres Australia
	Closing date for entries	www.rally.com.au/Gippsland
<b>Monday</b>	<b>29th July 2024</b> (2 weeks prior to event)	
	Entry list published	Sportity
<b>Wednesday</b>	<b>7th August 2024</b>	
1500hrs	Rally HQ opens	Heyfield
1800hrs	Rally HQ Closes	
<b>Thursday</b>	<b>8th August 2024</b>	
0630hrs	Rally HQ opens	Heyfield
0730hrs	Reconnaissance Commences (Sunday Stages only)	
0800-1200hrs	Testing Session 1	Stockdale
1300-1700hrs	Testing Session 2	Stockdale
1800hrs	Reconnaissance Concludes (Sunday Stages only)	
1800hrs	Rally HQ closes	
1800hrs	VRC competitor applications for Turbo Sealing close	
<b>Friday</b>	<b>9th August 2024</b>	
0630hrs	Rally HQ opens Documentation distribution commences	
0700hrs	Reconnaissance commences (Saturday Stages Only)	
0900hrs	RallySafe distribution commences	
1100hrs	Scrutineering, turbo sealing and weighing commences	Maffra - As per Bulletin
1400hrs	Reconnaissance concludes (Saturday Stages Only)	
1430hrs	Documentation distribution concludes RallySafe distribution concludes	
1500hrs	Scrutineering, turbo sealing and weighing concludes	Maffra - As per Bulletin
1500hrs	RallySafe unit <b><u>MUST</u></b> be fitted and switched <b><u>ON</u></b>	In Car
1600hrs	Rally Show Commences	Port of Sale
1615hrs	Crew Briefing (ARC & VRC)	Port of Sale Building
1630hrs	Top 3 VRC crew ballot for start position	Port of Sale Building
1700hrs	Leg 1 (ARC) / Heat 1 (VRC) start list published	Sportity
1700hrs	Rally Show Starts	Port of Sale
1830hrs	Rally Show Concludes	Port of Sale
2100hrs	Rally HQ closes Service Park Closes	Heyfield
<b>Saturday</b>	<b>10th August 2024</b>	
0600hrs	Rally HQ opens Service Park opens	
0930hrs	First ARC car starts Heat 1	Heyfield
1720hrs	First car into overnight parc fermé	Heyfield
2000hrs	Leg 2 start list published	Sportity
2100hrs	Rally HQ closes	Heyfield

2300hrs	All cars in Parc Fermé	Parc Fermé
<b>Sunday</b>	<b>11th August 2024</b>	
0630hrs	Rally HQ opens	Heyfield
0915hrs	First ARC car starts Heat 2	Heyfield
As per Itinerary	End of rally (first ARC car)	Heyfield
1600hrs	Podium	Service Park
1600hrs	Post event scrutineering commences	Thomson Valley Motors - Heyfield
	Provisional Event results published	Sportity
	Rally HQ closes 30 mins after the Provisional Results are Published.	

## ARTICLE 2 EVENT COMPLIANCE

This Event is to be held under the FIA International Sporting Code, including Appendices, the National Competition Rules (NCR) of Motorsport Australia, including Appendices, the Motorsport Australia Rally Standing Regulations (RSR), and the Motorsport Australia Rally Championship (ARC) Sporting and Technical Regulations including any Attachments and Addendums.

The number of the Motorsport Australia Permit authorising the event is: **824/1108/01**

The following Regulations are also applicable to this event:

- 2024 Victorian Rally Championship Standing Regulations

This event will be conducted under, and in accordance with Motorsport Australia OH&S, Safety 1<sup>st</sup> Integrity and Legal, and Risk Management Policies, including, but not limited to:

- Occupational Health and Safety Policy
- National Integrity Framework
- Diversity and Inclusion Policy
- Motorsport Australia Safety 1<sup>st</sup> Strategy

The policies and the strategy may be accessed using the following links:

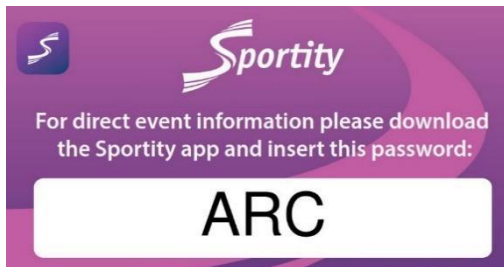
<https://motorsport.org.au/regulations/safety-integrity/policies>

<https://motorsport.org.au/regulations/safety-integrity/safety-first>

The organiser and promoter of The Middle of Everywhere Gippsland Rally 2024, to take place on 8th-11th August 2024, will be Vroom Events Inc.

**ARTICLE 3 GENERAL INFORMATION**

Rally Enquiries	<p><b>Andrew Roseman</b>                  Clerk of the Course  <a href="mailto:andrew@gippslandrally.com.au">andrew@gippslandrally.com.au</a></p> <p><b>Andrew Thorpe</b>                  Deputy Clerk of the Course  <a href="mailto:athorpe@gippslandrally.com.au">athorpe@gippslandrally.com.au</a></p>	<p><b>0413 307 766</b></p> <p><b>0438 802 427</b></p>
Website	<a href="http://www.gippslandrally.com.au">www.gippslandrally.com.au</a>	
Correspondence	<p><b>Lynn Cuttle</b>  <a href="mailto:entries@gippslandrally.com.au">entries@gippslandrally.com.au</a></p>	<p><b>0421 058 175</b>                  No responsibility will be accepted by the organisers for any correspondence sent to any other address.</p>
Rally Headquarters	Gordon Street Recreation Reserve Gordon St, Heyfield VIC 3858	
Media Enquiries	<p><b>Michael Finger</b>                  Media Manager  <a href="mailto:media@gippslandrally.com.au">media@gippslandrally.com.au</a></p>	<b>0419 006 252</b>
Official Notice Board	<p>The official notice board will be the digital notice board published on the Sportity app.                  This information will be also shown on the event website:  <a href="http://www.rally.com.au/gippsland">www.rally.com.au/gippsland</a></p>	



## ARTICLE 4 OFFICIALS OF THE RALLY

Role	Name	Number
<b>Motorsport Australia</b>		
Chief Steward	Paul Makela	N/A
Steward	William Bennett	N/A
Steward	Les Shadwick	N/A
Event Checker	Paul Franklin	0419 335 530
ARC Manager	Adrian Coppin	0415 508 244
ARC Sporting Delegate	Alan Vaughan	0412 974 747
ARC Safety Delegate	Michael Wallace	N/A
ARC Competition Checker	Chris Atkinson	N/A
ARC Medical Delegate	TBA	N/A
ARC Technical Delegate	Ben Afford	0407 793 991
SAS Results	RallySafe	0499 797 395
<b>Event Sporting Council</b>		
Clerk of the Course	Andrew Roseman	0413 307 766
Deputy Clerk of the Course	Andrew Thorpe	0438 802 427
Assistant Clerk of the Course - Sporting	Bernard Miron	0427 581 930
Assistant Clerk of the Course - Sporting	Rick Thorpe	0413 458 729
Event Secretary	Lynn Cuttle	0421 058 175
Marketing, Commercial and Public Events Manager	Michael Finger	0419 006 252
Documentation and Administration	Lynn Cuttle	0421 058 175
Competitor Relations Officer (CRO)	Natasha Swan	0427 309 349
Competitor Relations Officer (CRO)	John Downs	0429 669 827
Chief Medical Officer	Dr Luke Smith	0411 534 754
VRC Results Manager	Gary Hodgkiss	0408 541 441
Chief Scrutineer	Frank Black	0412 028 508
Chief Spectator Marshal	David Thorpe	0402 646 181
Rally Command / Communications	Michael Petersen	0413 081 184
Emergency Services Manager	Andrew Thorpe	0438 802 427
Course Car Manager	Michael Twycross	0490 843 134
Service Park Manager	Tim Shephard	0401 867 804

## ARTICLE 5 EVENT DESCRIPTION

- A) The Event will be an **ENDURANCE** event as defined in the ARC Sporting and Technical Regulations.
- B) The Event consist of two legs over two days consisting of 4 sections. The Event will start on 10th August and will be approximately 468.79km long, including 16 special stages totalling approximately 188 km.
- C) All special stages will be on gravel surfaces. See Itinerary - Attachment 1.
- D) The Victorian Rally Championship (VRC) will be contested over 8 special stages with two heats. The event will start on 10th August 2024 and finish on 10th August 2024 and will be approximately 229.80 km long including 8 Special Stages, with 120.74 km of competition.
- E) The VRC will be run as 2 heats as follows with points awarded for each heat;
  - Heat 1 – Saturday: SS1, 2, 3, 4 = 60.37km competitive
  - Heat 2 – Saturday: SS5, 6, 7, 8 = 60.37km competitive

## ARTICLE 6 EVENT ELIGIBILITY

---

As per the ARC Sporting and Technical Regulations with the addition of:

- Motorsport Australia Victorian Rally Championship

## ARTICLE 7 VEHICLE ELIGIBILITY

---

- A) As per the ARC Sporting and Technical Regulations.
- B) For VRC vehicle eligibility as per the 2024 Victorian Rally Championship Standing Regulations.

## ARTICLE 8 COMPETITOR AND CREW ELIGIBILITY

---

- A) As per the ARC Sporting and Technical Regulations.
- B) As per the VRC Standing Regulations Article 11. Crews who are already registered for the VRC will be eligible for championship awards, any new crews will not be registered or eligible for VRC series points but will be eligible for event awards.
- C) A compulsory competitor/crew briefing will be held at 1615hrs on 9th August in the Port of Sale Building.

## ARTICLE 9 ENTRY FORM, ENTRIES, ENTRY FEE & REFUND POLICY

---

- A) Entries are to be made via the online entry form available from the Motorsport Australia Members Portal <https://portal.motorsport.org.au/octozy/login>. Competitors unable to access the online entry form are to contact the Event Secretary. Payment is to be by Credit Card or EFT, as directed on the entry form. Entries will only be accepted when the Competitor, Driver and Co-Driver have been nominated on the entry form and payment has been made in full.
- B) All entries **MUST** include a copy of all required documentation i.e. licences (Motorsport Australia and civil), automobile registration papers and club memberships.
- C) Entries open upon publication of these Supplementary Regulations.
- D) Entries close on 26th July 2024 for all crews.
- E) The number of entries will be limited to 70. If this limit is exceeded, preference will be given to higher seeded drivers and/or those who have competed in other ARC events in 2024, and then in order of receipt of completed and paid entry forms.
- F) The entry fees for the Event are fixed as follows:
  - Bosch Motorsport Australia Rally Championship \$2450
  - Motorsport Australia Victorian Rally Championship \$1200
- G) An Entry Fee may be paid by Electronic Funds Transfer (EFT) to the following bank:  
Account Name: Vroom Events Inc.  
BSB: 033-341  
Account: 735962
- H) Entries withdrawn after close of entry but prior to publication of the Entry List for the event will have their Entry Fee refunded less \$100 (Administration fee). Should the Competitor subsequently volunteer as an Official of the event this will be reduced to \$75, (or \$50 if the Competitor supplies additional Officials who also assist in the Event),
- I) Any entry withdrawn after the Entry List has been published and prior to 5th August 2024, may be refunded up to 30% of their entry fee. For withdrawals after this date there will be NO REFUND,
- J) If the Event is cancelled less than 48 hours prior to the scheduled start of competition for reasons of Force Majeure, the Organisers may retain up to 25% of the Entry fee (as per NCR 11).



## **ARTICLE 10      INSURANCE**

---

- A)** Certain public, property, professional indemnity, and personal accident insurance is provided by Motorsport Australia.  
Further details can be found in the Motorsport Australia National Insurance Program Handbook, available at [www.motorsport.org.au](http://www.motorsport.org.au)
- B)** Service vehicles, management vehicles and reconnaissance vehicles, including those bearing special plates issued by the Organisers, are not to be considered as official participants of the rally. They are therefore not covered by the insurance policy of the rally and will remain the sole responsibility of their owner.

## **ARTICLE 11      RUNNING OF THE RALLY**

---

- A)** The event will start from TC 0 located in the Service Park at the Gordon Street Recreation Reserve, Heyfield, at 0930hrs on 10th August 2024,
- B)** The starting system for the special stages will be in accordance with the ARC Sporting and Technical Regulations.
- C)** The official time for the event shall be set to Australian Eastern Standard Time.
- D)** Competition in leg 2 (ARC) / heat 2 (VRC) will only be available to an automobile:
- Having finished the previous leg (ARC) / Heat (VRC); or
  - Having started, but not necessarily finished, the previous leg (ARC) and being placed in the overnight parc fermé, as detailed in the event itinerary.
- E)** Any crew wishing to re-join in the next leg (ARC) / heat (VRC) must advise the Competitor Relations Officer (CRO). ARC crews must advise the CRO of the intention to restart no later than 30 minutes prior to the scheduled publication of the start list for the next leg (ARC) or commencement of the next heat (VRC).
- F)** All competitors/Crews and their rally cars are to attend the “Rally Show” on Friday 9th August 2024 at the Port of Sale.

## **ARTICLE 12      SCRUTINEERING**

---

- A)** Prior to starting the event, each automobile must undergo scrutineering in accordance with the requirements of the ARC Sporting and Technical Regulations.
- B)** Scrutineering, apparel checks, turbo sealing and automobile weighing for all automobiles will be held on 9th August in the Wilmour Motors, Maffra, between 1100hrs and 1500hrs. A member of the service crew may present the automobile and apparel for inspection. A scrutineering schedule will be advised by Bulletin.
- C)** All signage required by the ARC Sporting and Technical Regulations and these Supplementary Regulations must be in place for scrutineering, at which time, scrutineers will check the signage placement.
- D)** Post event scrutineering will be held at Thomson Valley Motors, Heyfield, Information regarding post event scrutineering, e.g. route to travel, will be advised by communication to affected teams.
- E)** There will be no official scrutineering for VRC competitors, competitors must arrange their own regional scrutineering in the fortnight before the event.
- F)** VRC competitors who require Turbo and Supercharger sealing will need to make applications for sealing to the Chief Scrutineer no later than 1800hrs Thursday 8th August 2024.

## **ARTICLE 13 TESTING**

---

- A) Testing will be available on 8th August. There will be two 4hr sessions, one from 0800hrs to 1200 hrs, and the other from 1300 hrs to 1700hrs. Each session costs \$500 per car. Full details of the locations will be emailed directly to the crew.
- B) Applications for test sessions can be made using the online entry form. No hard copy forms will be available.
- C) Crews are permitted to carry out a maximum of two recce runs over the test stage up to 0750hrs under open road conditions. After this time the test road will be closed for the preparation of the testing stage. Crews testing in the afternoon will be availed time between 1210hrs and 1250hrs during the break between testing sessions to carry out reconnaissance.

## **ARTICLE 14 RECONNAISSANCE**

---

- A) As per the ARC Sporting and Technical Regulations.
- B) Reconnaissance will be monitored by the RallySafe Lite (RSLITE) app, including speed and number of passes through stages.
- C) The use of the RSLITE app is mandatory for all crews doing reconnaissance. Crews are reminded to have the latest version of RSLITE loaded to their phone.
- D) A reconnaissance schedule is shown at Attachment 2.
- E) It is strongly recommended, but not mandatory that VRC crews undertake Reconnaissance.

## **ARTICLE 15 SERVICING AND REFUELLING**

---

- A) As per the ARC Sporting and Technical Regulations.
- B) The Service Park is situated within the Heyfield Recreation reserve and utilises bitumen roads surrounded by solid (grassed) ground, with hardstand areas provided for large semi-trailers.
- C) Refueling zones will be located within the Service Park, Remote Service Park and the Remote Refuel. Service crews are to comply with the apparel requirements and to follow the directions of Rally Officials. All refuelling and/or decanting of fuels is to take place inside this Zone.
- D) Remote Refuel Vehicles - No vehicle over 6m in length will be permitted at both Saturday and Sunday remote refuel zones, this includes vehicles with trailers.
- E) Smoking (which includes e-cigarettes and “vaping”) and any naked flame is prohibited within 3 metres of any refuelling/defueling operation.

NOTE - In the Service Park Cars may only be washed by use of a sponge from a bucket. Where oils, solvents and degreasing fluids are used all residues must be securely contained and prevented from coming contact with the ground. The use of pressure cleaners is prohibited. Breaches noted by an Official of the Rally will be reported to the Stewards with a recommendation that a fine be applied.

The SONAX car wash bay is provided to all crew vehicles during Saturday & Sunday on the liaison into service park on Fawaz Street, Heyfield. Please use this to minimise vehicle cleaning within the service areas.

The entire service park is a designated “Non-smoking” area.

## **ARTICLE 16 APPLICATION OF REGULATIONS – CONTROLS AND PARC FERMÉ**

- A) For consistency, the penalties and other sporting regulations in the ARC Sporting and Technical Regulations shall apply to all crews entered in The Middle of Everywhere Gippsland Rally (ARC), and those entered in The Middle of Everywhere Gippsland Rally (VRC) and any other associated events, e.g. time controls and parc fermé.
- B) Power Stage Media Activities – At the Power Stage Stop Point crews may be required to participate in media activities that will require the crew to remain in the Stop Point control area or close to it. The time that crews remain in this area will be deemed a neutralisation period. The crew will have a Stop Point official note the time of the neutralisation period on their Time Card, this time will be added to the Target Time for that Road Section.
- C) There will be no wheel spin permitted at the beginning of each special stage. The No Wheel Spin Zone is defined as between the Start Line and Beige Board and will generally be 25m in distance. Following an alleged breach of this regulation, the Start Line Official will record the incident and immediately report it to the Clerk of the Course.

Penalties shall apply as follows:

1<sup>st</sup> Offence: Warning issued at the following time control

2<sup>nd</sup> Offence: 2 minute penalty added to the actual stage time

3<sup>rd</sup> Offence: Referred to the Stewards, the penalty for which may be as high as disqualification from the event

## **ARTICLE 17 EMERGENCY PROCEDURES AND RED FLAGS**

Crews must make themselves familiar with these emergency procedures, as outlined in the Supplementary Regulations and in front of the road book. Failure to adhere to these requirements will be reported to the Stewards for consideration of disqualification or other penalty.

### **A) Emergency Procedure**

- I. In the case of an accident where urgent medical or fire attention is required, where possible the red “SOS” sign should be immediately displayed to the following cars and to any helicopter attempting to assist. The Crew, if possible, where an electronic tracking/warning system is in use (e.g. RallySafe) should press the “SOS” button, if available. The system will ask “Medical” or “Fire”? The Crew must press one of the buttons to confirm the situation which will advise Rally Command so the correct emergency service can be dispatched. This can be done at any time following an accident, even if the “OK” message has been activated. If possible, the Crew should call the Rally Command emergency number and advise of their status.
- II. Any crew which has, the RallySafe red SOS screen displayed, the red “SOS” sign displayed to them, or which sees a car which has sustained an accident but is not displaying the green “OK” sign shall immediately and without exception stop to render assistance.
  - a. All following cars shall also stop.
  - b. The first car on the scene shall remain to render assistance.
  - c. The second car at the scene, if necessary, shall proceed to inform the next SOS radio point.
  - d. Notwithstanding the above, any person with appropriate training should remain on the scene if the situation demands
  - e. Subsequent cars shall leave a clear route for emergency vehicles and proceed at a reduced speed, to a maximum of 60kp/h, until the end of the special stage, and follow the instructions of any marshals or intervention car drivers.
  - f. Crews affected by this procedure will be allocated a time according to Article 22 of the ARC Sporting and Technical Regulations
- III. In the event of a car stopping on the stage or an accident where immediate medical or fire intervention is not required, the “OK” sign must be clearly and actively shown by a Crew member to at least the three following vehicles and to any helicopter attempting to assist. Where an electronic tracking/warning system

is in use (e.g. RallySafe) the Crew **MUST** press the “OK” button within 1 minute of the vehicle stopping, for any reason. Failure to adhere to these requirements will be reported to the Stewards for consideration of disqualification or other penalty

**B) Red Flag**

In the event of a special stage needing to be stopped, for any reason, SOS point officials will wave a red flag and the screen of the RallySafe console will turn red and show the message “RED FLAG”. On seeing any of these indications the crew **MUST**:

- I. reduce speed to a maximum of 60kp/h for the remainder of the special stage; and
- II. Crews must immediately confirm receipt of the electronic red flag by pressing the “ACKNOWLEDGE” button.
- III. Failure to comply with this rule will entail a penalty at the discretion of the Stewards.

**C) Interruption of a Special Stage (including Super Special Stages) – Notional Time**

When a special stage is interrupted or stopped for any reason, the Clerk of the Course will allocate, to each affected crew, a time which is judged to be reasonable and fair. A corresponding notification will be published by the Clerk of the Course, however, no crew which is solely or jointly responsible for stopping a stage may benefit from this measure. RSR-Special Stage Rally Articles 5.4 (e), (f) and (g) re Piggyback events do not apply to this event, as ARC and State crews may cross enter in the various competitions.

## **ARTICLE 18 RESULTS AND PROTESTS**

---

- A) Provisional results will be published on Sportity. These provisional results will become final 30 minutes after publication, subject to no protests being received, no issues are raised out of post event scrutineering and have been approved by the Stewards.
- B) Protests must be lodged in accordance with the Motorsport Australia National Competition Rules.
- C) The events listed in Article 5 D) will be scored and results issued by the VRC Results Manager.

## **ARTICLE 19 AWARDS**

---

- A) As per the ARC Sporting and Technical Regulations.
- B) As per 2024 Victorian Rally Championship Standing Regulations
- C) The Organisers reserve the right to combine trophies where crews win more than one award, and to add to the list of awards up to the start of the event.

## **ARTICLE 20 ALCOHOL, DRUGS, AND OTHER SUBSTANCES**

---

- A) Motorsport Australia’s National Integrity Framework and any associated policy (including the Australian Anti-Doping Policy, Motorsport Australia’s Illicit Drugs in Sport (Safety Testing) Policy, the Motorsport Australia Alcohol Policy), apply to any activity authorised by Motorsport Australia as published at motorsport.org.au.
- B) Any Participant including the holder of a Motorsport Australia Licence (or a Licence issued by another ASN) may be tested for the presence of alcohol, any drug or other banned substance. In addition to any penalty imposed by Motorsport Australia, a further penalty/s may be applied by Sport Integrity Australia.
- C) **Consumption of alcohol in the Service Park or any section of the competition venue under the control of rally officials is forbidden until ALL competition is concluded each day.**

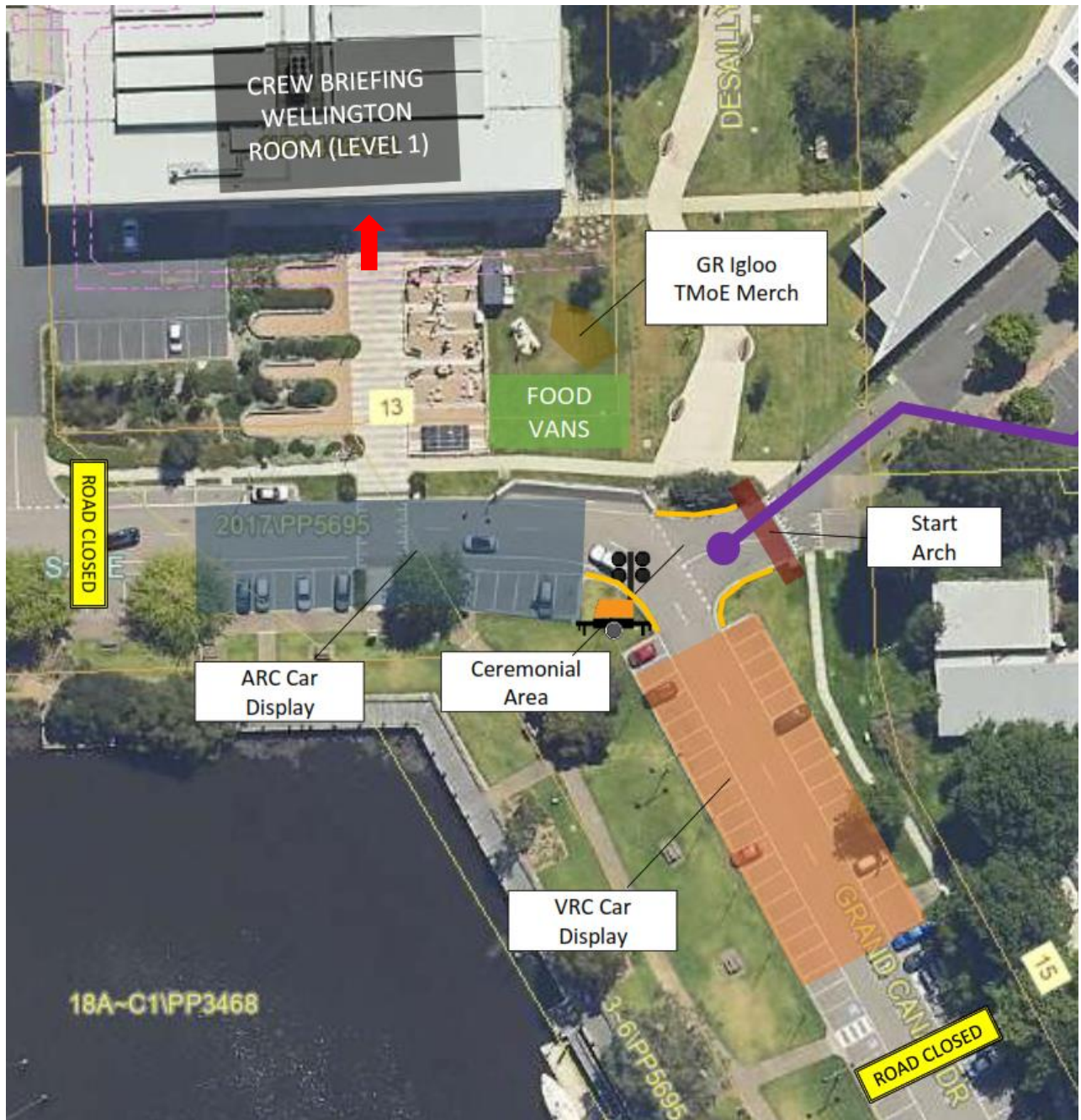
## ARTICLE 21 EVENT SPECIFIC REGULATIONS

### A) Rally Show - Friday 10th August

The Rally Show staging area will be open for crews or service crew member to park rally cars from 1400hrs. Traffic management will be in place from 1330hrs. Access to the staging area is to be via Grand Canal Drive. Entry via Park Street. Google link to this area <https://maps.app.goo.gl/ziC3b9vLR7MngQQz6>.

For some ARC crews, it is recommended that the vehicle travels directly from Scrutiny in Maffra to the Rally Show.

Vehicles are to be in place by 1545hrs and be **reversed** parked in the car parking bays as shown below. Please follow the direction of event officials.



A competitor/crew briefing will be held at 1615hrs in the Port of Sale building.

Following the briefing, we request that crews stay nearby their cars and engage with the public and fans. If you have any team posters or flyers please be kind to bring them along to distribute. There will be an autograph area for fans.

There will be a formal Ceremonial Start at 1700hrs including several welcome speeches from dignitaries. Upon conclusion of the ceremonial start, cars will be waved off at 30 second intervals.

Please note that it is not mandatory to return vehicles to Heyfield Service Park, as there is no overnight parc fermé prior to the commencement of the rally on Saturday. **Crews are to present to TCO as per the time published on the Start Order.**

B) Special Stage 4/8 - Restricted Speed Zone

A landslip that has impacted the competitive section in SS4/8. There will be a restricted speedzone in place at approximately 12.00km. This will be signed (RSZ) for recce and competition and will be noted in the road book. The restricted speed through this zone will be 40km/h, adherence to this speed through the zone will be monitored via RallySafe for all crews.

C) SS9 & SS16 - Aborted Start and Stopped Car

a. Aborted Start Procedure

Should a crew stop or have an issue on stage, the stage will be aborted for the next crew with no less than 30 seconds before the allocated start time.

b. Stopped Cars on Stage

If a car stops on stage, then the organisers will stop the running of the stage and remove if possible the vehicle from the stage or move it to a safe location.

## ATTACHMENT 1 EVENT ITINERARY

### ARC & VRC Itinerary (Leg 1)

Leg 1		Saturday 10 August 2024					(Sunrise 0704hrs, Sunset 1733 hrs)	
TC	Location	Distance			Target Time	1st Car Due		
SS	Name	SS	Liaison	Total				
Section 1	TC0	Assembly Out					9:30	
		Distance to next refuel	31.01	15.81	46.82			
	TC1			14.30	14.30	0:20	9:50	
	SS1	<b>Thomson 1</b>	<b>14.34</b>				9:53	
	TC2			1.26	15.60	0:17	10:10	
	SS2	<b>Deep Creek 1</b>	<b>16.67</b>				10:13	
	RZ1	Murderers Hill	[0.25]					
		Distance to next refuel	29.36	38.72	68.08			
	TC3			17.47	34.14	0:45	10:58	
	SS3	<b>Macalister 1</b>	<b>15.73</b>				11:01	
	TC4			1.03	16.76	0:18	11:19	
	SS4	<b>Chesterfield 1</b>	<b>13.63</b>				11:22	
	TC4A	Flexi Service Holding IN		20.47	34.10	0:38	12:00	
	TC4B	Flexi Service Holding OUT / Service IN	<b>Note:</b> Crews have a maximum of <b>15mins</b> to move their car into service from the holding area				12:15	
<b>Service A (Heyfield)</b>		<b>(60.37)</b>	<b>(54.53)</b>	<b>(114.90)</b>	<b>0:30</b>			
TC4C	Service OUT / Regroup IN					12:45		
	<b>Regroup</b>				<b>0:30</b>			
TC4D	Regroup OUT					13:15		
RZ2	Heyfield	[0.25]						
	Distance to next refuel	31.01	15.81	46.82				
TC5			14.30	14.30	0:25	13:40		
SS5	<b>Thomson 2</b>	<b>14.34</b>				13:43		
TC6			1.26	15.60	0:17	14:00		
SS6	<b>Deep Creek 2</b>	<b>16.67</b>				14:03		
RZ3	Murderers Hill	[0.25]						
	Distance to next refuel	29.36	38.72	68.08				
TC7			17.47	34.14	0:45	14:48		
SS7	<b>Macalister 2</b>	<b>15.73</b>				14:51		
TC8			1.03	16.76	0:18	15:09		
SS8	<b>Chesterfield 2</b>	<b>13.63</b>				15:12		
TC8A	Flexi Service Holding IN		20.47	34.10	0:38	15:50		
TC8B	Flexi Service Holding OUT / Service IN	<b>Note:</b> Crews have a maximum of <b>45mins</b> to move their car into service from the holding area				16:35		
<b>Service B (Heyfield)</b>		<b>(60.37)</b>	<b>(54.53)</b>	<b>(114.90)</b>	<b>0:45</b>			
TC8C	Service OUT / Parc Ferme IN	<b>E</b>				17:20		
<b>Saturday Totals</b>		<b>(120.74)</b>	<b>(109.06)</b>	<b>(229.80)</b>				

V1 - 13.06.24

**ARC Itinerary (Leg 2)**

Leg 2	Sunday 11 August 2024					(Sunrise 0702 hrs, Sunset 1734 hrs)
TC	Location	Distance			Target Time	1st Car Due
SS	Name	SS	Liaison	Total		
TC8D	Parc Ferme A OUT / Service IN					9:15
<b>Service C (Heyfield)</b>					<b>0:20</b>	
TC8E	Service OUT					9:35
RZ4	Heyfield					
	Distance to next refuel	32.90	78.17	111.07		
TC9			26.00	26.00	0:30	10:05
SS9	<i>Hillclimb</i>	0.95				10:08
TC10			19.44	20.39	0:30	10:38
SS10	<i>Kennedys Flat 1</i>	2.44				10:41
TC11			4.35	6.79	0:10	10:51
SS11	<i>Insolvent 1</i>	13.91				10:54
TC12			6.57	20.48	0:30	11:24
SS12	<i>Stoney 1</i>	15.60				11:27
TC12A	Remote Service IN		21.81	37.41	0:41	12:08
<b>Remote Service D (Briagolong)</b>		<b>(32.90)</b>	<b>(78.17)</b>	<b>(111.07)</b>	<b>0:15</b>	
TC12B	Remote Service OUT					12:23
RZ5	Briagolong					
	Distance to End of Event	34.32	93.60	127.92		
TC13			7.84	7.84	0:15	12:38
SS13	<i>Kennedys Flat 2</i>	2.44				12:41
TC14			4.35	6.79	0:10	12:51
SS14	<i>Insolvent 2</i>	13.91				12:54
TC15			6.57	20.48	0:30	13:24
SS15	<i>Stoney 2</i>	15.60				13:27
TC16			48.55	48.55	0:50	14:17
SS16	<i>Boisdale (Power Stage)</i>	2.37				14:20
TC16A	End of Event - Parc Ferme Podium IN	E	26.29	28.66	0:40	15:00
<b>Podium Presentation</b>						16:00
<b>Sunday Totals</b>		<b>(67.22)</b>	<b>(171.77)</b>	<b>(238.99)</b>		

Section 3

V1 - 13.06.24

Totals of the Rally	SS	Liaison	Total	%
Saturday 27 August	120.74	109.06	229.80	52.54%
Sunday 28 August	67.22	171.77	238.99	28.13%
<b>Total - 16 SS</b>	<b>187.96</b>	<b>280.83</b>	<b>468.79</b>	<b>40.09%</b>



## ATTACHMENT 2 RECONNAISSANCE SCHEDULE

Thursday 8 <sup>th</sup> August (Sunday stages)			
Stage	Stage comparison	Open	Close
SS9	Same as 2023	0730hrs	0800hrs
		1300hrs	1330hrs
SS16	New course between start and total 1.04km Then same as 2023 to total 2.37km	0800hrs	0900hrs
		1330hrs	1430hrs
SS10/SS13	Same as 2023	0800hrs	1800hrs
SS11/SS14	Same as 2023	0800hrs	1800hrs
SS12/SS15	Same as 2023 to total 5.69km OR Same as 2022 to total 10.42km Then new to F/F at 15.65km	0800hrs	1800hrs

### Notes:

- It is the intention that crews complete reconnaissance for both SS9 & SS16 within the same session.
- Latest Start time of SS10 is 1500hrs to enable two passes of SS10/11/12, single loop time is approx. 1.5hrs

Friday 9 <sup>th</sup> August (Saturday stages)			
Stage	Stage comparison	Open	Close
SS1/5	Same as 2023	0700hrs	1300hrs
SS2/6	Same as 2023	0700hrs	1300hrs
SS3/7	Same as 2023	0800hrs	1400hrs
SS4/8	Same as 2023	0800hrs	1400hrs

### Notes:

- Latest Start time of SS1/5 is 1000hrs to enable two passes of SS1/5 & SS2/6
- Latest Start time of SS3/7 is 1100hrs to enable two passes of SS3/7 & SS4/8
- Single loop time for Saturday stages is approx. 3hrs

### Reconnaissance Notes

#### Saturday

While it is possible to recce stages SS1 & SS2 twice before moving to stages SS3 & SS4, for least time and distance travelled, it is recommended that all stages are done consecutively in two loops. To get directly from end of SS 4/8 back to start of SS1/5 follow road section after end of SS4/8 up to and including Tulip 17 on Page 33, and use the following instructions to get to start SS1/5:

Odometer	Instruction	
21.48	KR then 50m TR	SP Seaton Glenmaggie Rd
25.43	SO FMR	(SP Old Joes Rd)
27.83	TL then 80m TR	SP Cowwarr-Seaton Rd
32.03	TR Start Gravel	SP Stoney Creek Rd

*Then follow the Road Book from Tulip 13 on Page 11 to start SS1/5*

### **Sunday**

Due to the configuration of SS9 and SS16, reconnaissance must be carried out separately with two passes of the stage taking place within a single session. Reconnaissance will not be permitted outside the nominated session times.

Crews will be held at the start line of SS9 by an Event Official until the preceding crew has passed Tulip 2, after which the next car will be allowed to commence reconnaissance of the stage.

Once the session for SS9 concludes, crews are to assemble at the start of SS16 and may commence at normal intervals. However, it is to be noted that an Event Official will be positioned at Tulip 5 and will hold crews until the preceding crew has completed reconnaissance of the Hillclimb track component of the stage and has passed the flying finish.

It is recommended that reconnaissance of SS10 – SS12 is to be completed consecutively in two loops. To get directly from the end of SS12/15 back to the start of SS10/13 follow road section after end of SS12/15 up to and including Tulip 25 on Page 31, and use the following instruction to get to the start of SS10/13.

<b>Odometer</b>	<b>Instruction</b>
34.63	Give Way then TR      SP Freestone Creek Rd

*Then follow the Road Book from Tulip 18 on Page 16 to start SS10/13*

